



TEKNE is in the market of heavy off road trucks since 30 years.

Among its products, TEKNE designs and produces vehicles and solutions for the heavy vehicles rescue.

Our wrecker is equipped with a crane boom with 2 hydraulic extensions with hydraulic lifting, 2 rear and 2 front hydraulic outriggers, one 20ton pull winch and one 20ton lift winch.

From the turret, the operator acts on a TEKNE designed Manouever Station to move the crane, winches, outriggers and work lights.β

## WRECKER 200

Power rescue

Road  
recovery truck

by TEKNE  
made in Italy

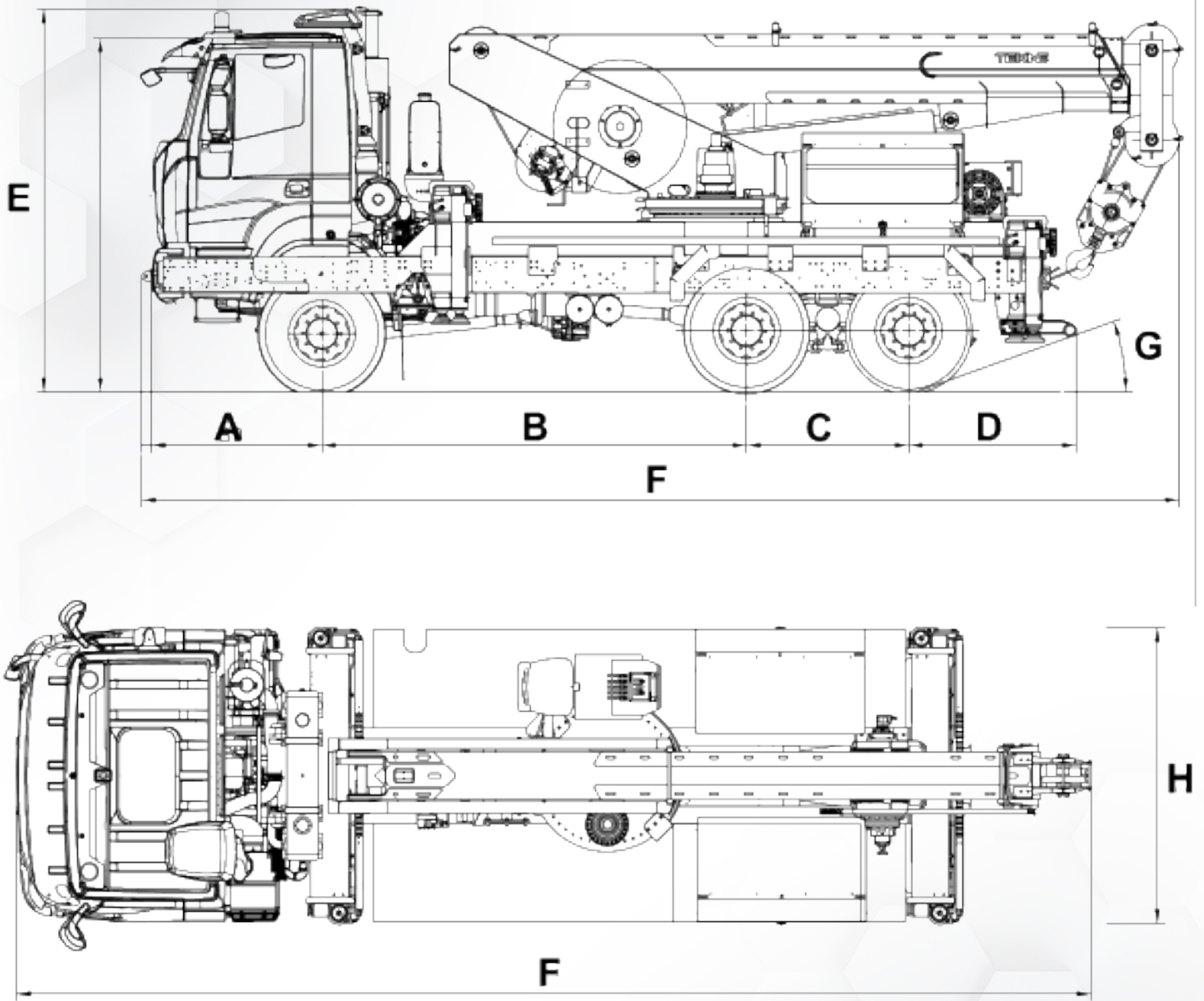


This document may not be considered as a contract specification .  
Tekne reserves the right to modify the technical characteristics of this equipment without notice.



[www.tekne.it](http://www.tekne.it)  
[sales@tekne.it](mailto:sales@tekne.it)

# WRECKER 200



## DIMENSIONS

A	1525 mm	E	3470 mm
B	3800 mm	F	9200 mm
C	1450 mm	G	25°
D	1405 mm	H	2500 mm



# WRECKER 200

## Technical details

### ENGINE

Engine	IVECO - CURSOR F3B 13	Power	309 kW (420 HP)
Cylinders	6 in line cylinder	Emissions reg.	Euro 3

### GEARBOX

Brand	Manual ZF-16S 2220	N.of gears	16+2
-------	--------------------	------------	------

### AXLES & WEIGHTS

N. Of Axles	3	N. Of tires on the two rear axles	8
Load on Front Axle	8000 kg	Load on Rear Axle	22000 kg

### ELECTRICS

Nominal Voltage	24 Volt	Batteries Quantities	2
Batteries nominal capacity	12V - 170 Ah	Starter Motor	24 V - 5.5 kW
Alternator	28 V - 90 A		

### CAB INTERIOR

Air conditioning inside cab	Front sun visor	Reverse gear beeper	Third seat in the cabin
-----------------------------	-----------------	---------------------	-------------------------

### TYRES

Model	Michelin - 13 R 22,5	Number	10+1
-------	----------------------	--------	------

### WRECKER

Manufacturer	TEKNE srl	Model	200
Operating System	Hydraulic	Base boom	1
Telescopic boom sections	2	Boom/Turret rotation	310° degrees
Boom Type	Telescopic	Boom Extension Speed	3m/min

### BASE BOOM (CLOSED)

Boom length	6m	Max load radius	2.75 m - distance from the ring center of the base to the pulley-holder axis
Max lifting height at hook	5.8 meter	Lifting capacity	15 ton

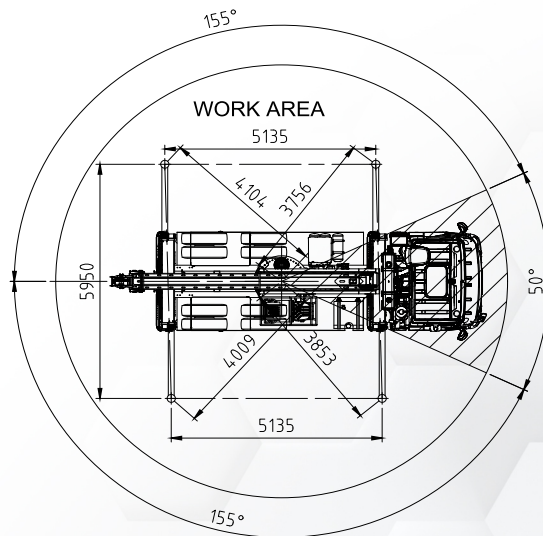
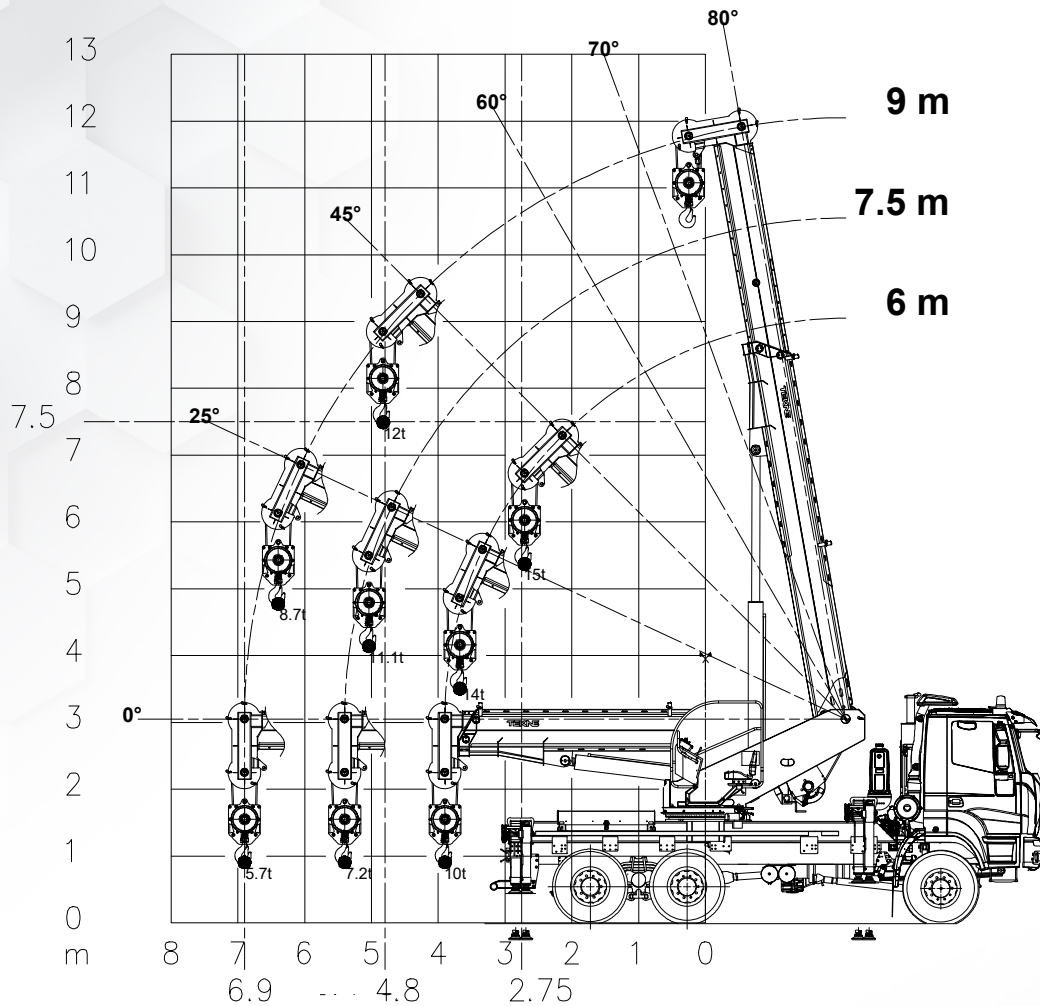
### BOOM (FULLY EXTENDED)

Boom length	9 m	Max load radius	4,8 m
Max lifting height at hook	7.5 m	Boom Max lifting radius (degrees)	0° / 80°
Max Lifting capacity	7.5 ton	Rear lifting capacity at max working distance	4.8 ton
Side lifting capacity at max working radius	12 ton	Side lifting capacity at max working radius	70°



Road  
recovery truck  
by TEKNE  
made in Italy

# WRECKER 200



M&CDAT031-001ENEd01

TEKNE srl  
Headquarters  
Contrada San Matteo, 42  
66030 Poggiofiorito (CH)  
ITALY  
E-mail: sales@tekne.it

Operational Unit - Ortona  
C.da Alboreto, ex SS538  
66026 Ortona (CH)  
ITALY  
Ph.: +39 0871 938820

All rights reserved ©Tekne srl 2020